

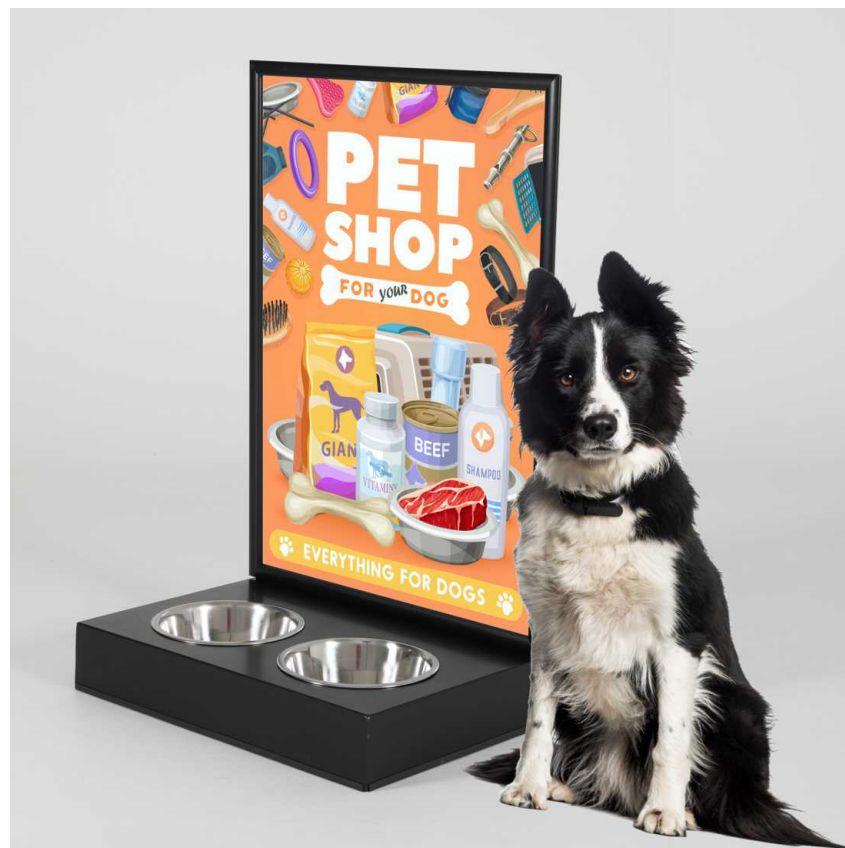


## Dog water station with advertising panel

### Short Description

- Twin bowl dog watering station with integral advertising back panel
- Outdoor A1 poster frame as standard - can be upgraded to printed shaped panel (MOQ)
- Dog water station in black or silver looks good on any pavement

### Product Images









Waterproof gasket









## Description

---

### **Dog water station**

Our two-bowl dog watering station is ideal for advertising your business or your brands to dog owners and pet lovers. Outdoor dog water stations are valued by dog walkers and offer a friendly way to promote your products or services.

There are two options:

<https://dev.sign-holders.co.uk/pavement-signs/dog-bowl-stands/dog-water-station-with-advertising-panel.html>

07/11/2024

- The standard model we stock comes with a large A1 size poster frame. The stand is black or silver with a matching frame.

The snap-open surround lets you insert our own poster behind the supplied clear plastic cover.

A weatherseal gasket means that plain paper posters can be used, although for longer term display we suggest you get your poster printed on waterproof plastic in case there is any leakage or internal condensation. (Posters are not included).

- The alternative model has a rigid back panel with an attractive domed top. The aluminium composite material is suitable for printing on or can accept applied graphics. For a print run of 50 or more we can offer a factory-applied printing service. For prices of the bespoke options please get in touch. We'll be pleased to advise and quote for your project.

Our advertising stand with dog bowls features a sturdy steel base. This is zinc plated and powder-coated for outdoor durability. A rubber strip prevents abrasion on tarmac or a concrete pavement. The two dog bowls are made from stainless steel. They are recessed into the base for stability but can be lifted out for refilling and cleaning.

### **Perfect vehicle for brand promotions**

Dog watering stations with an advertising panel are ideal for positioning outside pet stores, garden centres and many retail establishments who want to offer a welcome watering point to their customer's dogs. A smaller single bowl stand is available for venues such as pubs and bars who do not wish to display a large advertisement. See link below.

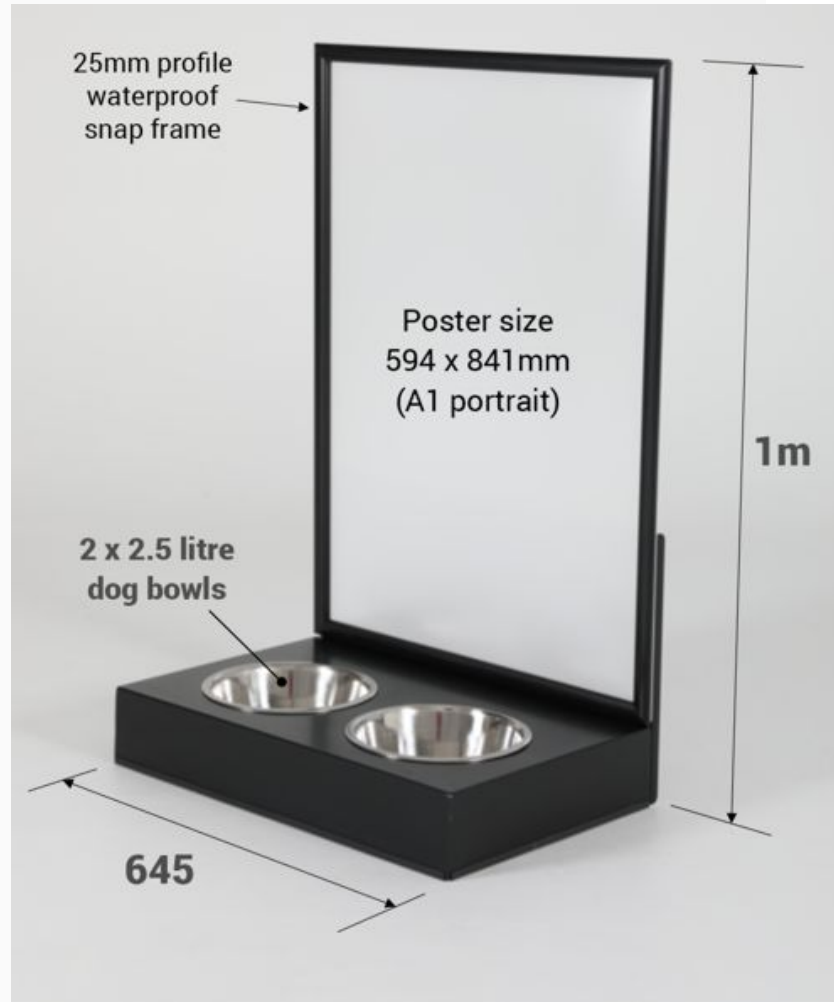


## Additional Information

### More Information

- The A1 poster frame is relatively large and may potentially catch the wind. We do not recommend this product out in the open in exposed windy locations. When positioned with its back to the wall or in a sheltered area it should prove stable.
- The panel version with a direct-print advertisement displays a permanent graphic. The poster frame is more suitable when seasonal offers or changing promotions are envisaged.

### Product Dimensions



### Delivery and Returns

- We offer a choice of delivery options tailored to the goods selected and your location, calculated for you automatically in the Checkout. When feasible, you will be offered options for Free, Economy or Next Day delivery.
- Any product returned by the purchaser must be unused and in its original packaging, which should be unmarked. If goods are received damaged or faulty we will take care of the problem.
- For detailed information about Delivery charges or Returns and refund policies, please click on the links below.

Include in Google Feed

Yes

Postable

No

Small parcel

No

Oversize

No

